



MALABAR
artistic furniture

MALABAR

artistic furniture

Malabar designs and crafts exclusive artisanal furniture with a distinct artistic aesthetic.

Driven by the cultural Portuguese richness, Malabar blends great sense of design with the savoir-faire of our devoted artisan's expertise. Combining noble and exotic woods with the most exclusive craftsman techniques, result of centuries of experience and expertise, Malabar becomes a statement of home style and modern luxury design 'Made in Portugal'.

Our furniture design and production stems from the Oporto area, a northern region in Portugal with a long and strong tradition in artisanal handmade furniture. Our design identity is based on modernizing the architectural and artistic heritage of the past 5 centuries, both Portuguese and international, while seeking to evoke emotions through its pieces. Our unique furniture offer is defined as a preference for noble woods and our artisan's expertise in different wood crafting techniques.

All of our pieces are produced with noble, premium and durable materials such as wood, brass, gold leaf, silver leaf, among others, by talented craftsmen and artists.



facebook.com/malabarpt twitter.com/malabarpt pinterest.com/malabarpt

info@malabar.com.pt | www.malabar.com.pt



LIGNUM SIDE TABLE
PAGE 13



WANDERLUST SIDE TABLE
PAGE 14



VOLUTE SIDE TABLE
PAGE 17



CANOPY SIDE TABLE
PAGE 19



STRATUM SIDE TABLE
PAGE 20



WANDERLUST CONSOLE
PAGE 64



PRIZMA CONSOLE
PAGE 68



WATERLILY COFFEE TABLE
PAGE 22



WATERLILY CENTER TABLE
PAGE 25



FITOS CENTER TABLE
PAGE 26



FITOS TABLE SET
PAGE 27



TORSION CENTER TABLE
PAGE 29



BRASILIA CABINET
PAGE 70



TORSION CABINET
PAGE 73



MONDO CABINET
PAGE 75



EDROS CABINET
PAGE 76



VENEZIA CABINET
PAGE 79



ETHNOS CENTER TABLE
PAGE 31



CANOPY CENTER TABLE
PAGE 32



KENZO CENTER TABLE
PAGE 35



WATERLILY PEDESTAL TABLE
PAGE 36



TEMPLIO CABINET
PAGE 80



EMEL BOOKCASE
PAGE 85



MODULER SIDEBOARD
PAGE 87



RADIEUX SIDEBOARD
PAGE 88



VOLUTE DINING TABLE
PAGE 38



VOLUTE II DINING TABLE
PAGE 41



WANDERLUST DINING TABLE
PAGE 43



LEVEZA DINING TABLE
PAGE 45



FÉ DINING TABLE
PAGE 47



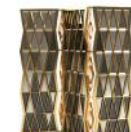
WATERLILY MIRROR
PAGE 90



TORSION MIRROR
PAGE 92



TRINITY MIRROR
PAGE 95



TRINITY FOLDING SCREEN
PAGE 97



PROPORTION CONSOLE
PAGE 50



TRINITY CONSOLE
PAGE 53



SLIM CONSOLE
PAGE 55



DYNASTY CONSOLE
PAGE 58



DYNASTY DISPLAY STAND
PAGE 61



FÉ STOOL
PAGE 99



DYNASTY DINING CHAIR
PAGE 100



DYNASTY ARMCHAIR
PAGE 103



VALENCIA ARMCHAIR
PAGE 104

HERITAGE

collection

SIDE TABLES CENTER TABLES DINING TABLES CONSOLES DRESSING TABLES CABINETS SIDEBOARDS MIRRORS



CROCHET SIDE TABLE
PAGE 109



CROCHET II SIDE TABLE
PAGE 110



SAFFRON SIDE TABLE
PAGE 112



LAZULI SIDE TABLE
PAGE 115



HORIZON SIDE TABLE
PAGE 116



ABBEY CABINET
PAGE 156



VIRTUOSO CABINET
PAGE 161



SAGRES SIDEBOARD
PAGE 163



HORIZON SIDEBOARD
PAGE 164



TARSIA SIDE TABLE
PAGE 120



MAJESTIC SIDE TABLE
PAGE 122



MARQUIS SIDE TABLE
PAGE 124



AKO SIDE TABLE
PAGE 127



MELODIE MIRROR
PAGE 166



EVORA MIRROR
PAGE 169



PILAR MIRROR
PAGE 173



GOA MIRROR
PAGE 174



MARIA MIRROR
PAGE 177



FILIS NESTING TABLE
PAGE 128



PLAZA NESTING TABLE
PAGE 130



HORIZON CENTER TABLE
PAGE 135



PILAR DINING TABLE
PAGE 137



DUCHESS DINING TABLE
PAGE 138



VIANA FLOOR MIRROR
PAGE 179



CAMELIA FOLDING SCREEN
PAGE 181



CORTEZ DINING TABLE
PAGE 141



OURO CONSOLE
PAGE 142



FIGEN CONSOLE
PAGE 147



ARMOR CONSOLE
PAGE 149



PILAR BAR STOOL
PAGE 182



VIANA DRESSING TABLE
PAGE 151



AMELIE DRESSING TABLE
PAGE 153



FIGEN BENCH
PAGE 154

HERITAGE

collection

SIDE TABLES CENTER TABLES DINING TABLES CONSOLES DRESSING TABLES CABINETS SIDEBOARDS MIRRORS

EUPHORIA
collection

TUDO ISTO É
collection

SIDE TABLES TABLE SETS CONSOLES NIGHTSTANDS CABINETS STOOLS



NEBULA SIDE TABLE
PAGE 189



FE SIDE TABLE
PAGE 190



SIENNA SIDE TABLE
PAGE 192



SIENNA TABLE SET
PAGE 195



AZULEJO III GUITAR
PAGE 216



MINHO GUITAR
PAGE 219



FADO GUITAR
PAGE 220



RADIANT SLIM CONSOLE
PAGE 196



RADIANT SLIM II CONSOLE
PAGE 201



RADIANT SLIM III CONSOLE
PAGE 203



PROPORTION II CONSOLE
PAGE 204



PROPORTION II NIGHTSTAND
PAGE 205



VIRTUOSO II CABINET
PAGE 206



TEMPLO II CABINET
PAGE 209



ANTLER HEAD MOUNT
PAGE 210



MIST STOOL
PAGE 213

WORLD/ARCHITECTS
collection





LIGNUM SIDE TABLE

Dia. 25.5cm | 10" H 52cm | 20.4"

The delicate, almost sculptural shape of Lignum is inspired by the supertrees in the Gardens by the Bay in Singapore, an overwhelming architectural and landscape wonder of the 21st century.

Material | Brushed antiqued brass and black and gold marble table top.



WANDERLUST SIDE TABLE

Dia. 50cm | 19.6" H 40cm | 15.7"

On Wanderlust side table, a variety of pipes in polished brass and walnut root veneer with high gloss varnish carries the same artificial yet natural landscape into any interior space.

Material | Pipes in polished brass and walnut root veneer with high gloss varnish.





VOLUTE SIDE TABLE

Dia. 62cm | 24.4" H 70cm | 27.5"

In Volute side table, Malabar honors the Prairie School of architecture with an inspired modernist design.

Material | Table top in clear glass with a wooden lacquered frame with high gloss varnish.
Legs composed by ironwood and lacquered wooden rings.



CANOPY SIDE TABLE

Dia. 60cm | 23.6" H 60cm | 23.6"

The Canopy side table reflects the Spanish architects taste for combining geometric shapes with rational lines in an structures, such as the one seen in the Planetarium building in Valencia.

Material | Structure lacquered in piano black. Table top in ironwood.



STRATUM SIDE TABLE

Dia. 45cm | 17.7" H 50cm | 19.6"

Inspired by the master of the organic design Lloyd Wright, Stratum side table emerge from the ground in layered wooden structure lacquered in glossy piano black perfect for exquisite environments

Material | copper leaf coated and lacquered wooden structure with high gloss varnish.



WATERLILY COFFEE TABLE

W 150cm | 59.1" D 75cm | 29.5" H 75cm | 29.5"

Frank Lloyd Wright, undisputed name of world architecture that Malabar pays tribute by presenting Waterlily, a coffee table that stands out for its originality and sobriety.

Material | Surface in radial matched ironwood veneer with lacquered wooden frame finished with high gloss varnish. Lacquered wooden feet with high gloss varnish.





WATERLILY CENTER TABLE

W 150cm | 59.1" D 75cm | 29.5" H 75cm | 29.5"

Frank Lloyd Wright, undisputed name of world architecture that Malabar pays tribute by presenting Waterlily, a center table that stands out for its originality and sobriety.

Material | Surface in radial matched ironwood veneer with lacquered wooden frame finished with high gloss varnish. Lacquered wooden feet with high gloss varnish.



FITOS CENTER TABLE

W 160cm | 62.9" D 160cm | 62.9" H 30cm | 11.8"

Just as Rossi tried to weave his buildings into the urban fabric, our Fitos center tables was designed to immerse itself into a cosmopolitan and modern environment.

Material | Copper leaf coated wood with high gloss varnish. Base in solid walnut wood.



FITOS TABLE SET

small	W 40cm 15.7"	D 40cm 15.7"	H 45cm 17.7"
medium	W 60cm 23.6"	D 60cm 23.6"	H 35cm 13.7"
large	W 80cm 31.4"	D 80cm 31.4"	H 30cm 11.8"

Just as Rossi tried to weave his buildings into the urban fabric, the Fitos table set, was designed to immerse itself into a cosmopolitan and modern environment.

Material | Copper leaf coated wood with high gloss varnish. Base in solid walnut wood.

TORSION CENTER TABLE

small W 53cm | 20.8" D 89cm | 35" H 27cm | 10.6"
large W 120cm | 47.2" D 130cm | 51.1" H 34cm | 13.3"

Inspired in MADs Absolute Towers, the Torsion center tables is composed of 2 modular pieces that combined clear glass with dynamic and fluid layers of a vibrant walnut wood.

Material | Top in clear glass.
Base with gold leaf coated and walnut root veneered wood with glossy varnish.





ETHNOS CENTER TABLE

Dia. 100cm | 39.37" H 35cm | 13.7"

Matching Foster's principle of embedding his projects in its surroundings in the most organic way, Ethnos center table naturally inhabits vibrant, ethnic and modern living rooms.

Material | Top with mirror, elm burl root and bird's eye veneer with high gloss finish
Base in gold leaf coated wood with high gloss varnish.

WORLD ARCHITECTS COLLECTION

CANOPY CENTER TABLE

small **Dia.** 70cm | 27.5" **H** 29cm | 11.4"
large **Dia.** 100cm | 39.3" **H** 37cm | 14.5"

The Canopy center table reflects the Spanish architects taste for combining geometric shapes with rational lines in an structures, such as the one seen in the Planetarium building in Valencia.

Material | Top in polished verde indiana marble and lacquered wood base with high gloss varnish.





WORLD ARCHITECTS COLLECTION

KENZO CENTER TABLE

W 200cm | 78.7" D 130cm | 51.2" H 75cm | 29.5"

The Kenzo Center Table blends history and contemporary style. Versatile and stylish, the Kenzo Center Table perfectly responds to the specific needs of any modern living spaces.

Material | Structure in polished brass, table top in clear glass and the sides in walnut root veneered wood with glossy varnish.



WORLD ARCHITECTS COLLECTION

WATERLILY PEDESTAL TABLE

Dia. 115cm | 45.5" H 75cm | 29.6"

Frank Lloyd Wright, it is to this undisputed name of world architecture that Malabar pays tribute by presenting Waterlily, a pedestal table that stands out for its originality and sobriety.

Material | Top in radial matched ironwood veneer with lacquered wooden frame finished with high gloss varnish. Lacquered steel branches and lacquered wooden trunk.





VOLUTE DINING TABLE

W 300cm | 118.11" D 110cm | 43.3" H 77cm | 30.3"

In Volute dining table, Malabar honors the Prairie School of architecture with an inspired modernist design.

Material | Table top and legs in ironwood. Rings on legs lacquered in piano black.



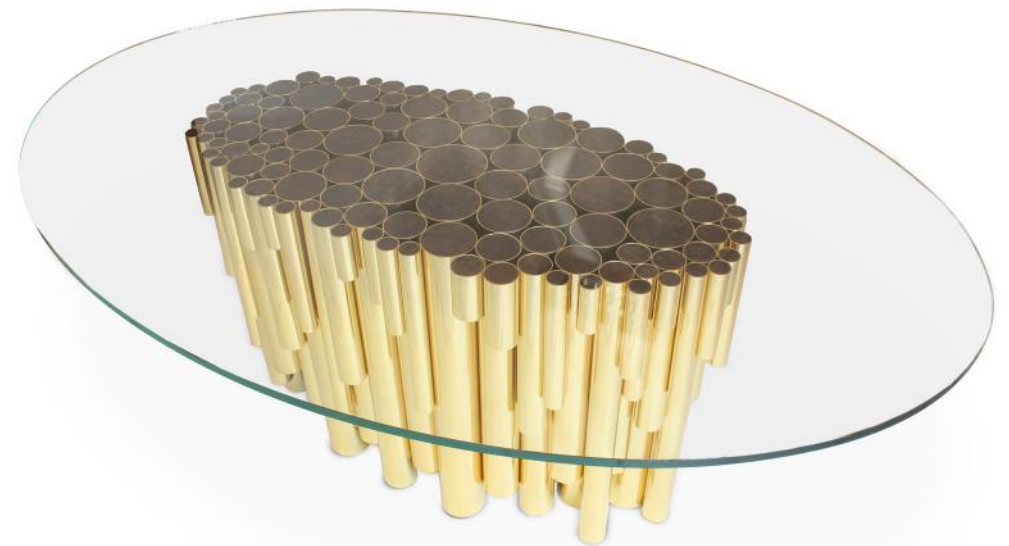


VOLUTE II DINING TABLE

W 200cm | 78.5" D 110cm | 43.3" H 77cm | 30.3"

In Volute II dining table, Malabar honors the Prairie School of architecture with an inspired modernist design.

Material | Table top and legs in ironwood. Rings on legs lacquered in piano black.



WANDERLUST DINING TABLE

W 200cm | 78.7" D 130cm | 51.2" H 75cm | 29.5"

On Wanderlust dining table, a variety of heights and widths of the polished brass pipes carries the same artificial yet natural landscape into any interior.

Material | vExtra clear glass top. Pipes in gold plated brass and walnut root veneer accents.



LEVEZA DINING TABLE

W 250cm | 98.43" D 120cm | 47.24" H 80cm | 31.3"

Leveza is a piece of art so unique and sublime that it is able to fit the environment that surrounds it in a remarkably genuine way.

Material | Table top finished in ironwood. Supported by an iron lacquered structure or by a polished stainless steel.



FÉ DINING TABLE

Dia. 180cm | 70.9" H 80cm | 31.4"

Brasília Cathedral's 16 columns, which emerge like a root of a tree, are the inspiration for Malabar's Fé dining table.

Material | Table top in ironwood. Iron feet lacquered in piano black.





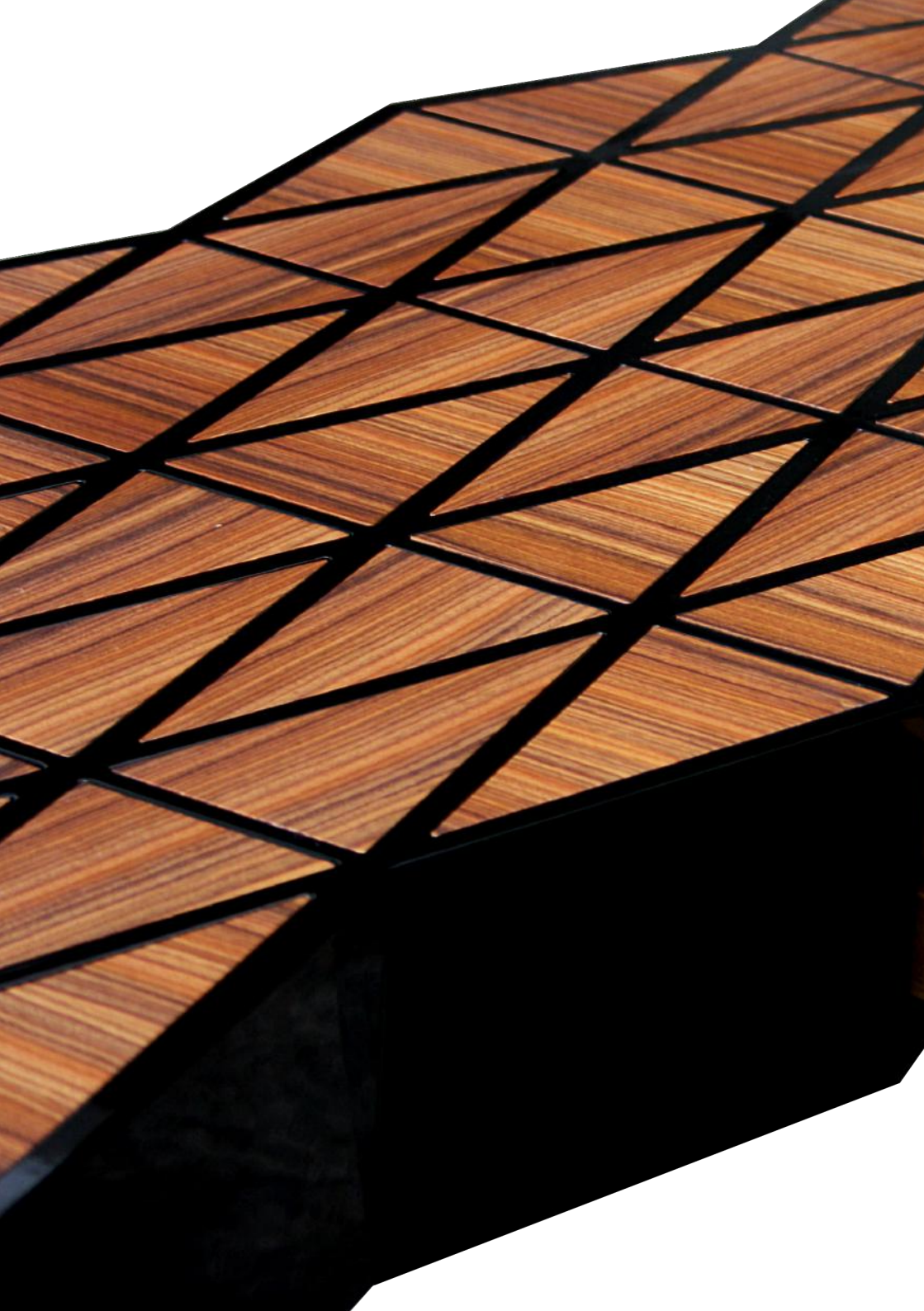
PROPORTION CONSOLE

W 182.4cm | 71.81" D 45cm | 17.71" H 90cm | 35.43"

Mies Van der Rohe is the inspiration to the Proportion console and its symmetrical design. the console combines simplicity with design in a sublime and natural way, appealing to those who prefer functional and modern pieces.

Material | Top finished with ironwood. Legs lacquered in piano black.





TRINITY CONSOLE

W 151cm | 59.5" D 47cm | 18.5" H 85cm | 33.3"

In Trinity, the top in wood and piano black lines and the legs in iron are reminiscent of Norman Foster's preference for oblique and geometric lines.

Material | Surface in ironwood. Drawers in satinwood with front lacquered in piano black. Iron feet also lacquered in piano black.



SLIM CONSOLE

W 120cm | 47.24" D 40cm | 15.75" H 90cm | 35.43"

Inspired by Mies Van Der Rohe and based on his artistic vision of "Less is more", Slim was designed.

Material | Top finished with silver leaf with a high gloss varnish finish. Interior (drawers) in solidwood. Support in ebony wood.





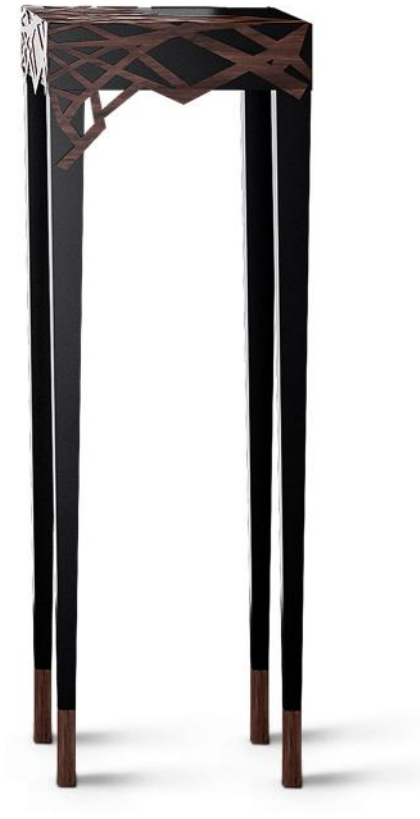
DYNASTY CONSOLE

W 150cm | 59" D 40cm | 15.7" H 100cm | 39.3"

While the hands of our experienced artisans replicate the silhouette of the trees on the console, the Dynasty console attempts to convey the same feeling of lightness and uniqueness.

Material | Drawer and ornaments in ironwood wood. Structure in satinwood, lacquered in piano black. Accents in aged brushed brass.



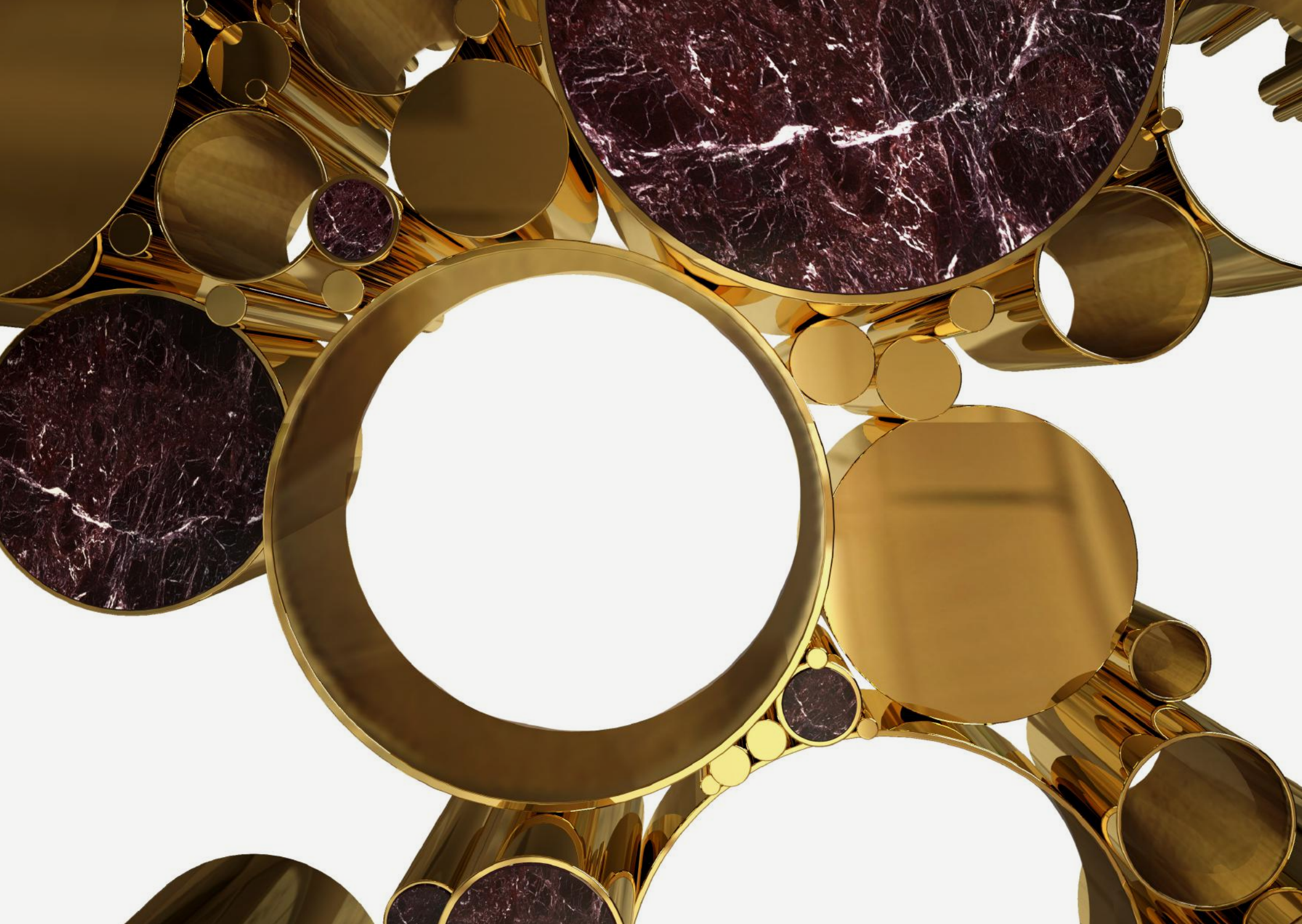


DYNASTY DISPLAY STAND

W 40cm | 15.7" D 40cm | 15.7" H 95cm | 37.4"

While the hands of our experienced artisans replicate the silhouette of the trees on the console, the Dynasty display stand attempts to convey the same feeling of lightness and uniqueness.

Material | Drawer and ornaments in ironwood wood.
Structure in satinwood, lacquered in piano black.



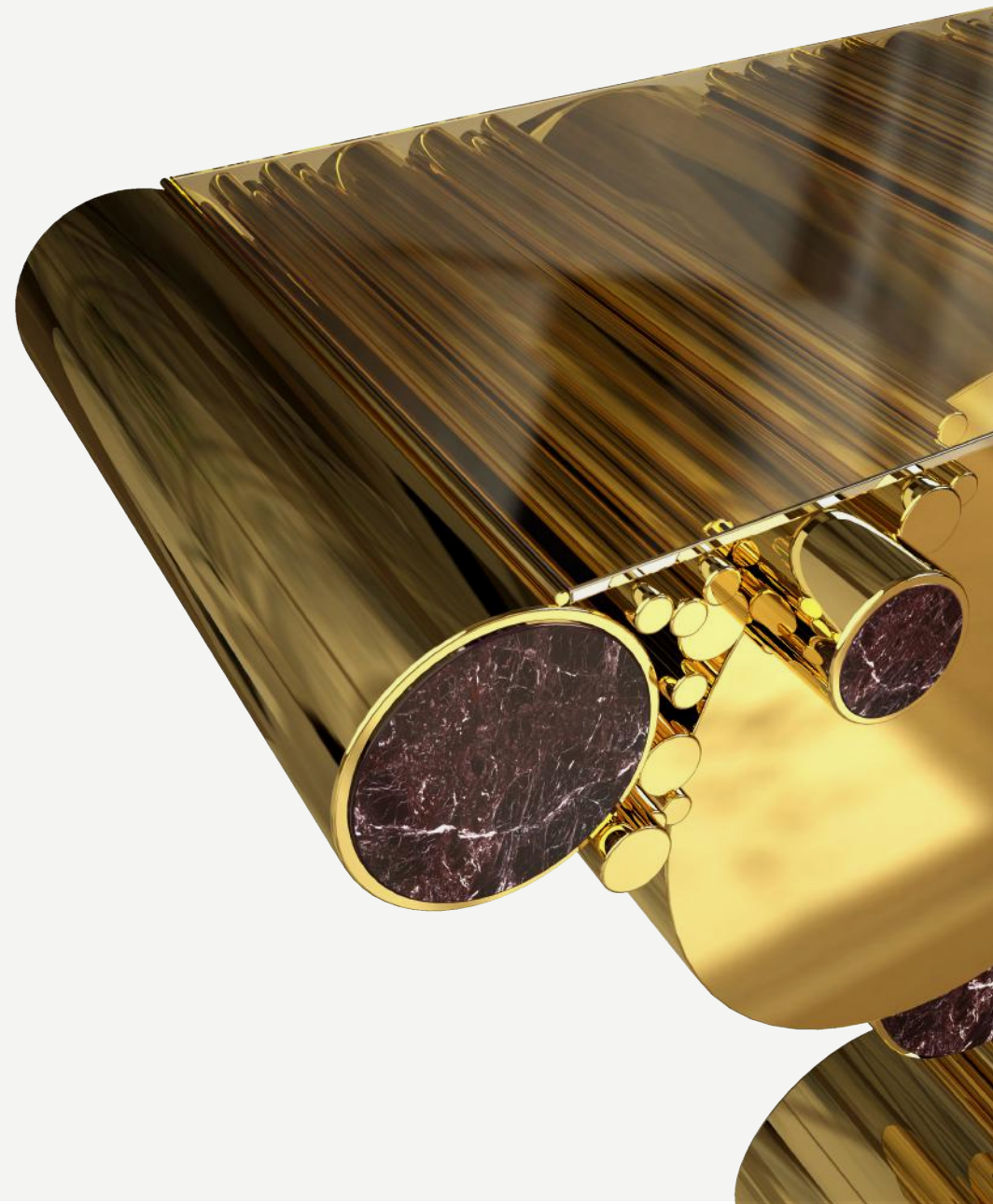


WANDERLUST CONSOLE

W 147cm | 57.87" D 40cm | 15.74" H 90cm | 35.43"

On Wanderlust console, a variety of widths of the polished brass pipes carries the same artificial yet natural landscape into interior spaces.

Material | Structure in polished brass adorned with rosso levanto marble accents.
Console top in tinted glass.







PRIZMA CONSOLE

W 180cm | 70.8" D 50cm | 19.6" H 85cm | 33.4"

Inspired by the very best projects of Zaha Hadid, Prizma Console is one of those dignified looking pieces that can go with just about any style.

Material | Top in solid walnut with natural varnish. Base in polished brass.



BRASILIA CABINET

W 86cm | 33.8" D 64cm | 25.2" H 180cm | 70.9"

The two 100 meter high towers of Oscar Niemeyer's National Congress Palace in Brasilia inspired Malabar to design this cabinet.

Material | Finished with ironwood and natural varnish.
Feet and center piece lacquered in piano black.





TORSION CABINET

W 140cm | 55.1" D 55cm | 21.6" H 160cm | 62.9"

Inspired in MADs Absolute Towers, the Torsion cabinet is composed of dynamically fluid layers of a unique natural wooden pattern, finished with a high gloss varnish.

Material | Layers in vibrant walnut wood and gold leaf finished table top in clear glass.



MONDO CABINET

W 100cm | 39.37" D 57cm | 22.44" H 180cm | 70.86"

Surprise is key in all art. The Mondadori headquarters remains one of the most compelling memories of Oscar Niemayer's work and is now the inspiration to the Mondo Cabinet.

Material | Gold leaf legs and structure, colored mirror tiles and mirrored interior with black lacquered shelves.



EDROS CABINET

W 126cm | 49.6" D 114cm | 44.8" H 200cm | 78.7"

The Edros cabinet drinks from Casa da Musica, one of the most important concert halls of the past 100 years, but also from the CCTV headquarters, a distinguished skyscraper in China. Both are distinctive projects from the outstanding repertoire of Rem Koolhaas.

Material | Cabinet top finished in mother of pearl-style lacquer on the exterior and adorned with gold leaf and bronze laminated glass in the interior. The structural base is finished with ironwood and enveloped by a matrix of brass.





VENEZIA CABINET

W 95cm | 37.4" D 50cm | 19.6" H 190cm | 78.7"

Inspired by the beauty of picturesque alleyways and romantic canals, the design of the Venezia Cabinet shares the mysterious map of the city of Venice, full of hidden treasures and breath taking places.

Material | Exterior in qalnut root veneered wooden structure lacquered in black with gradient effect and finished with glossy varnish, polished brass base and elements. Interior in Aged gold leaf with high gloss varnish and aged mirror, smoked glass shelves, polished brass accents.



TEMPLO CABINET

W 80cm | 31.5" D 80cm | 31.5" H 160cm | 62.99"

Templo cabinet stands out in any room of a house or hotel area for its bright colors, shapes and design. It is a drinks cabinet so carefully handpainted and finished that its appearance resembles actual ceramic tiles.

Material | Body carved and hand painted, supported by a structure in ironwood.
Interior coated in gold leaf.







EMEL BOOKCASE

W 63cm | 24.8" D 45cm | 17.1" H 135cm | 53.4"

The urban influence of Rossi and Malabar's aesthetic converge to create a modern and spirited piece.

Material | Solid Brazilian rosewood and wood veneer patchwork on the shelves and brass structure.



MODULER SIDEBOARD

W 200cm | 78.74" D 60cm | 23.62" H 85cm | 33.46"

Mies van der Rohe once said "God is in details".
It is with high precision and refined details that the Moduler sideboard seduces and thrills.

Material | Structure in ironwood, interior (drawers) and base in satinwood,
with slow motion system.

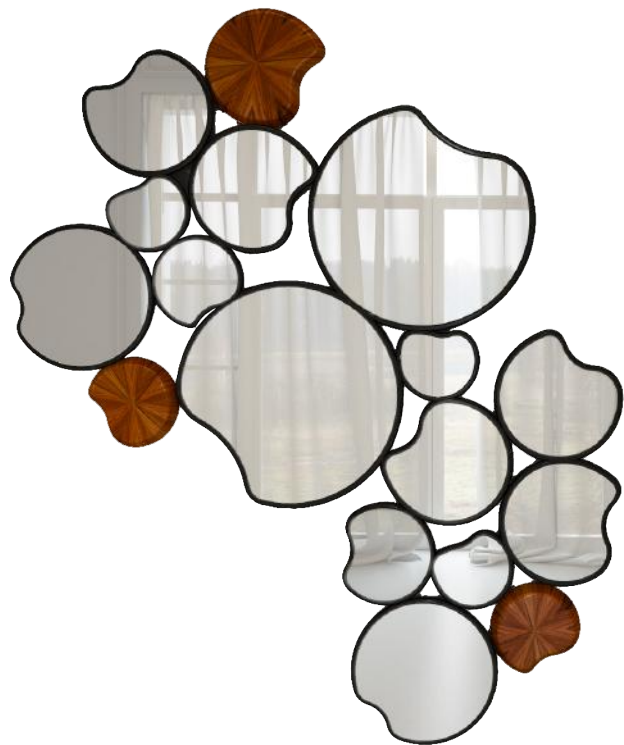


RADIEUX SIDEBOARD

W 201cm | 79.13" D 50.5cm | 19.88" H 91cm | 35.83"

This Malabar piece was inspired in Le Corbusier, one of the pioneers of modern architecture. Similarly to Le Corbusier, Malabar takes us to a world where perfection and functionality come together seamlessly.

Material | Structure and support coated with silver leaf, drawers and interior in solid wood with slow motion system.



WATERLILY MIRROR

W 127cm | 50" D 5cm | 1.9" H 153cm | 60.2"

Frank Lloyd Wright, it is to this undisputed name of world architecture that Malabar pays tribute by presenting Waterlily mirror, a piece that stands out for its originality and sobriety.

Material | Decorative pieces in ironwood. Mirror pieces lacquered in piano black.





TORSION MIRROR

Dia. 160cm | 63" D 12cm | 4.7"

Inspired in MADs Absolute Towers, the Torsion mirror is composed of 4 dynamically fluid layers of a unique natural wooden pattern, finished with a high gloss varnish.

Material | Four layers of natural wooden pattern, finished with high gloss lacquer and two layers of silver leaf coated wood.





TRINITY MIRROR

Dia. 130cm | 51.1" D 10cm | 3.9"

In the Trinity mirror the gold leaf application, piano black lacquer and mirror are all reminiscent of Foster's preference for oblique and geometric lines.

Material | Solid wood lacquered in piano black, gold leaf and mirror.



TRINITY FOLDING SCREEN

W 200cm | 78.7" H 190cm | 74.8"

In the Trinity folding screen, the surfaces exhibit a rhythmic combination of translucent glass, smoked glass and mirror, all within an intersecting structure of polished brass, reminiscent of Foster's preference for oblique and geometric lines.

Material | Translucent glass, smoked glass and mirror with polished brass structure.



FÉ STOOL

Dia. 33cm | 13" H 56.6cm | 22.2"

One of Brasília's most famed building was created with the precise hand of Oscar Niemeyer. Brasília Cathedral's 16 columns, which emerge like a root of a tree, are the inspiration for Malabar's Fé Stool.

Material | Surface in ironwood. Iron structure lacquered in black matte.



DYNASTY DINING CHAIR

W 50cm | 16.9" D 50cm | 16.9" H 93cm | 36.6"

The 2013 Pritzker Architecture Prize winning architect Toyo Ito is the notable architect that provoked the creation of Dynasty dining chair. Toyo Ito aspires to be light and transparent.

Material | Structure finished with rosewood. High quality fabric available in several colors.





DYNASTY ARMCHAIR

W 60cm | 23.6" D 80cm | 31.4" H 130cm | 51.1"

The 2013 Pritzker Architecture Prize winning architect Toyo Ito is the notable architect that provoked the creation of Dynasty armchair. Toyo Ito aspires to be light and transparent.

Material | Structure finished with rosewood. High quality fabric available in several colors.



VALENCIA ARMCHAIR

W 60cm | 23.6" D 100cm | 39.3" H 120cm | 47.2"

Valencia armchair is inspired in the planetarium building designed by the acclaimed architect Santiago Calatrava. This extraordinary piece reflects the geometric shapes combined with sober lines that create a simple yet stunning armchair with an organic and flowing structure.

Material | Structure in solid wood, lacquered in piano black.
High quality fabric, available in various colors.





HERITAGE
collection



CROCHET SIDE TABLE

Dia. 50cm | 19.6" H 52cm | 20.4"

A tribute to the skills of the artisan, Crochet is a unique sculpting work of a crochet pattern, finding its eternal edification on a high-gloss lacquer wood available in varying colours.

Material | Structure in solid wood finished with gold leaf or lacquered.
Available in various colours and leaves.



CROCHET II SIDE TABLE

D 50cm | 19.6" H 52cm | 20.4"

Crochet is a unique sculpting work, finding its eternal edification on a high-gloss lacquer wood available in varying colours.

Material | High gloss black lacquer finishing.





SAFFRON SIDE TABLE

Dia. 45cm | 17.71" H 60cm | 23.6"

A contemporary tribute to their enchantment and value, Saffron side table, a hand crafted jewel in itself, is the embodiment of these tokens in a side table. It is crafted with gold plated brass legs, an ironwood top in marquetry with an inlay of golden details.

Material | Top in ironwood with inlaid pieces of brass.
Feet in solid brass, legs lin ironwood lacquered in gold.





LAZULI SIDE TABLE

Dia. 60cm | 23.6" H 61cm | 24"

Floral motifs can be found on all surfaces of the majestic Lazuli side table. On the top, a floral marquetry effect was created with caviuna veneers, and on the base, each of the pentagonal surfaces are a modern take of the Portuguese tile.

Material | Surface in ironwood. Base in brass and black mirror.



HORIZON SIDE TABLE

Dia. 40cm | 19.6" H 72cm | 28.3"

The Horizon side table recalls the tales of the Portuguese maritime exploration, retold by ingenious poets and common people alike for many centuries thereafter.

Material | Surface in walnut root wood veneer.
Structure in wood, with the combination of black lacquer and gold leaf.







TARSIA SIDE TABLE

small Dia. 40cm | 15.7" H 40cm | 15.7"
large Dia. 40cm | 15.7" H 50cm | 19.6"

The Tarsia side table set combines marquetry, one of the most remarkable antique inlay techniques, with a contemporary flavor, signed by Malabar designers.

Material | Radial matched wood veneer of palisander and gold plated brass feet.





MAJESTIC SIDE TABLE

small **Dia.** 40cm | 15.7" **H** 50cm | 19.6"
large **Dia.** 50cm | 19.6" **H** 60cm | 23.6"

A tribute to the Modernism movement established in the early 1900s, the Majestic side table set is a memento of the coffeehouses of conversation and exchange in which intellectual elites such as Fernando Pessoa advanced ideas about national culture and politics.

Material | Gold leaf and black lacquer finishing.





MARQUIS SIDE TABLE

Dia. 65cm | 25.5" H 50cm | 19.6"

The Marquis side table pays homage to chess, a strategic game par excellence. Just like chess pawns, these solid wood tables are discrete yet memorable pieces with the finest elaborate lines finished with lacquered colors.

Material | Solid wood lacquer finishing.



AKO SIDE TABLE

Dia. 44cm | 17.3" H 45cm | 17.7"

Inspired by 16th century European voyagers' who travelled to Japan, the Ako side table is an ode to great inventiveness, ability and courage.

Material | Lacquered hand carved wooden structure with polished brass base, hand painted lid and polished brass interior with cup holders.



FILIS NESTING TABLE

small **Dia.** 50cm | 19.6" **H** 56cm | 22"
large **Dia.** 60cm | 23.6" **H** 66cm | 47.2"

Having passed down through centuries and generations of jewelers, today Malabar takes the ancient tradition of Filigree, seeking to revive it and propel it further, by the hand of skilled artisans.

Material | HDF structure finished in beige and bordeaux lacquer.
Table top decoration finished in gold.





PLAZA NESTING TABLE

small	W 70cm 27.5"	D 55cm 21.6"	H 40cm 15.7"
medium	W 70cm 27.5"	D 55cm 21.6"	H 40cm 15.7"
large	W 70cm 27.5"	D 60cm 23.6"	H 50cm 19.6"

A gift of one country to the world,
the patterned mosaic of cobblestones is the inspiration behind the Plaza nesting table.

Material | Metal structure with a high-gloss black lacquer and copper finish.
Top in black glass and transparent glass with a handpainted
pattern of Portuguese cobblestone.







HORIZON CENTER TABLE

small **Dia.** 94cm | 37" **H** 27cm | 10.6"
large **Dia.** 132cm | 51.9" **H** 35cm | 13.7"

The Horizon center table recalls the tales of the Portuguese maritime exploration, retold by ingenious poets and common people alike for many centuries thereafter.

Material | Surface in walnut root wood. Structure in wood, with the combination of black lacquer and gold leaf.

HERITAGE COLLECTION

PILAR DINING TABLE

Dia. 150cm | 59" H 75cm | 29.5"

The signature imprint of Malabars baroque is felt in the heavily intricate and meticulous carving of the Pilar dining table. The eye-catching Pilar brings culture, detail and history to noble dining rooms.

Material | Top in vintage finished silver leaf coated wood with high gloss varnish.
Gold plated brass legs.



HERITAGE COLLECTION

DUCHESS DINING TABLE

W 200cm | 78.7" D 130cm | 51.1" H 76cm | 29.9"

Each line naturally traced on the Duchess' marble table top tells the story of this raw material of a thousand trades, out of which ancient masters and artisans carved stonework and embellished noble monuments.

Material | Top in black Portoro marble and gold plated brass legs.



HERITAGE COLLECTION

CORTEZ DINING TABLE

W 300cm | 118.1" D 140cm | 55.1" H 76cm | 29.9"

Elegant and simply described as the bastion of portuguese luxury, Cortez dining table projects the esplendor of the unique edge of the Kings and the Queens' era. Its timeless originality and emperor design, was inspired by the Ajuda National Palace in Lisbon.

Material | Table top in wood finished with high gloss lacquer and adorned with gold leaf coated elements on the sides. Base in wood finished with high gloss lacquer featuring polished brass semi-spheres in the feet.





OURO CONSOLE

W 145cm | 57" D 45cm | 17.7" H 90cm | 35.4"

The Age of Discovery brought light over the Dark Ages, by allowing rare and precious goods to travel from one country to the next, leaving people everywhere in awe of what the world had to offer.

Material | Gold leaf drawers, gold plated feet and ornaments.
Ironwood structure and glass top.





avallados mas ll. - The - 00
ez.

7-301-0-1



FIGEN CONSOLE

W 140cm | 57" D 45cm | 17.7" H 90cm | 35.4"

Plants of Mediterranean origin became the signature elements used to create baroque ornaments in architecture and artifacts. Thanks to the detailed baroque carvings on the Figen console that creates intense shadows, its dramatic appeal is undeniable.

Material | Black lacquered wood with high gloss varnish.
Solid wood with translucent lacquer on silver leaf.



ARMOR CONSOLE

W 152cm | 59.8" D 40cm | 15.7" H 90cm | 35.4"

Inspired by the ornamental motifs in antique metal armors, the Armor Console perfectly recreates the force and the spirit of Portugal's first king. This emblematic piece glorifies Portuguese culture as well as Malabar's design.

Material | High gloss black lacquered particle board top.
Antiqued silver leaf feet.



VIANA DRESSING TABLE

W 115cm | 45.2" D 40cm | 15.7" H 90cm | 35.4"

This piece of art of ancient origin, that has only a few knowledgeable artisans reproducing the technique today, is proudly displayed on Viana dressing table.

Material | Ombré lacquer effect with high gloss varnish finish.
Velvet bordeaux on the interior drawers.



AMELIE DRESSING TABLE

W 114cm | 44.88" D 53cm | 20.87" H 138cm | 54.33"

Amélie Dressing Table is an expression of mystic and magic. This black lacquered coiffeuse adorned by a brass structure and golden accents is a masterpiece inspired by the last queen of Portugal. Its seven mirrors reflect the seven secrets of the queen's eternal beauty.

Material | Structure lacquered in high gloss piano black with gold leaf elements.
Feet lacquered in high gloss piano black with polished brass accents.

HERITAGE COLLECTION

FIGEN COFFEE TABLE

W 114cm | 44.8" D 52cm | 20.4" H 42cm | 16.5"

Plants of Mediterranean origin became the signature elements used to create baroque ornaments in architecture and artifacts. Thanks to the detailed baroque carvings on the Figen coffee table that creates intense shadows, its dramatic appeal is undeniable.

Material | Wood carving, finished with white lacquer and high gloss varnish.
Top in walnut wood with vintage finish.





ABBEY CABINET

W 86cm | 33.8" D 50cm | 19.68" H 190cm | 74.8"

Every inch of the hand-carved Abbey Cabinet exudes an element that represents some of the most extraordinary relics on mankind.

Material | Structure in oak, walnut or beech wood with a customizable lacquer finish.
Glass doors and ironwood interior.



ABBEY CABINET

HERITAGE COLLECTION





VIRTUOSO CABINET

W 100cm | 39.3" D 60cm | 23.6" H 150cm | 59"

The art of the tile expands across borders, while portraying discoveries, journeys and historical episodes of a nation. Reflected on the Virtuoso cabinet are iconic floral patterns, traditionally observed in Portuguese-style tiling.

Material | Structure in oak, walnut or beech wood with a customizable lacquer finish. Interior in satinwood and ironwood veneers. Feet in ironwood.



SAGRES SIDEBOARD

W 190cm | 74.8" D 50cm | 19.68" H 86cm | 33.85"

The compass rose and latitude lines of nautical charts of yesteryear symbolise years of trial and error of intrepid nautical explorers — paying homage to their discoveries as they fervently found safety in the open sea and were undaunted in their travels despite fierce winds.

Material | Finished with poplar wood and supported by gold and bronze plated steel.



HORIZON SIDEBOARD

W 150cm | 59" D 40cm | 15.7" H 100cm | 39.3"

The Horizon sideboard recalls the tales of the Portuguese maritime exploration, retold by ingenious poets and common people alike for many centuries thereafter.

Material | Walnut wood root with black lacquered wood and a luxurious base finished in gold leaf with shelvings in black glass on interior.





MELODIE MIRROR

Dia. 140cm | 55.1" D 4cm | 1.57"

In Baroque music, the rhythmic patterns heard at the beginning of the piece were reiterated many times throughout the piece. Similarly, the Melodie mirror strives to transmit a feeling of continuity and harmony with its handcrafted baroque ornaments.

Material | Metal structure decorated with several elements. Finished in gold leaf.



HERITAGE COLLECTION



EVORA MIRROR

W 120cm | 47.2" D 4cm | 1.5" H 200cm | 78.7"

The Evora mirror is a Rococo-style carving of a gilded laurel branch, with a circular panoramic mirror at the center. The intricate etching of the branches is gold coated to look as though Evora was taken from the richly adorned walls of centenary churches.

Material | HDF structure finished with gold leaf, manually darkened.



PILAR MIRROR

HERITAGE COLLECTION



PILAR MIRROR

Dia. 106cm | 41.7" D 4cm | 1.5"

The signature imprint of Malabar's baroque is felt in the heavily intricate and meticulous carving of the Pilar mirror. Borrowing the flower ornaments from beautifully adorned baroque churches, palaces, manors or monuments, the eye-catching Pilar brings culture, detail and history to noble interiors.

Material | Gold leaf finishing, black lacquered wood and gold polished brass.
Available in various colours.



GOA MIRROR

Dia. 126cm | 49.6" D 4cm | 1.5"

One of Goa's trademarks is its distinct architecture, a singular combination of imposing European façades matched with rich colors and exotic verandas.

Material | Gold leaf finishing, bronze coloured mirror and mirror.





MARIA MIRROR

W 140cm | 55.1" D 7cm | 2.7" H 156cm | 61.4"

Inspired by Maria's favorite tiara, this mirror reflects the sophistication coming from the Portuguese Royal Family.

Material | Structure in lacquered wood.
Mirrors in antiqued grey mirror and antiqued bronze glass.



HERITAGE COLLECTION



VIANA FLOOR MIRROR

W 100cm | 39.3" D 65cm | 25.5" H 180cm | 70.8"

This piece of art of ancient origin, that has only a few knowledgeable artisans reproducing the technique today, is proudly displayed on the Viana Floor Mirror.

Material | Structure in black lacquer with a high gloss varnish finish and gold filigree.
Gold plated brass legs.



CAMELIA FOLDING SCREEN

W 220cm | 86.6" D 5cm | 1.9" H 190cm | 74.8"

The famed Portuguese tile adorning this piece uses the 17th century style pattern camélia. Combining classic floral motifs with mirrored surfaces, Camelia creates a versatile and stylish room divider, an ideal fit for both classic and contemporary spaces.

Material | Structure in solid cherry wood and mirror surface.
Handpainted illustrations finished with a high gloss varnish.

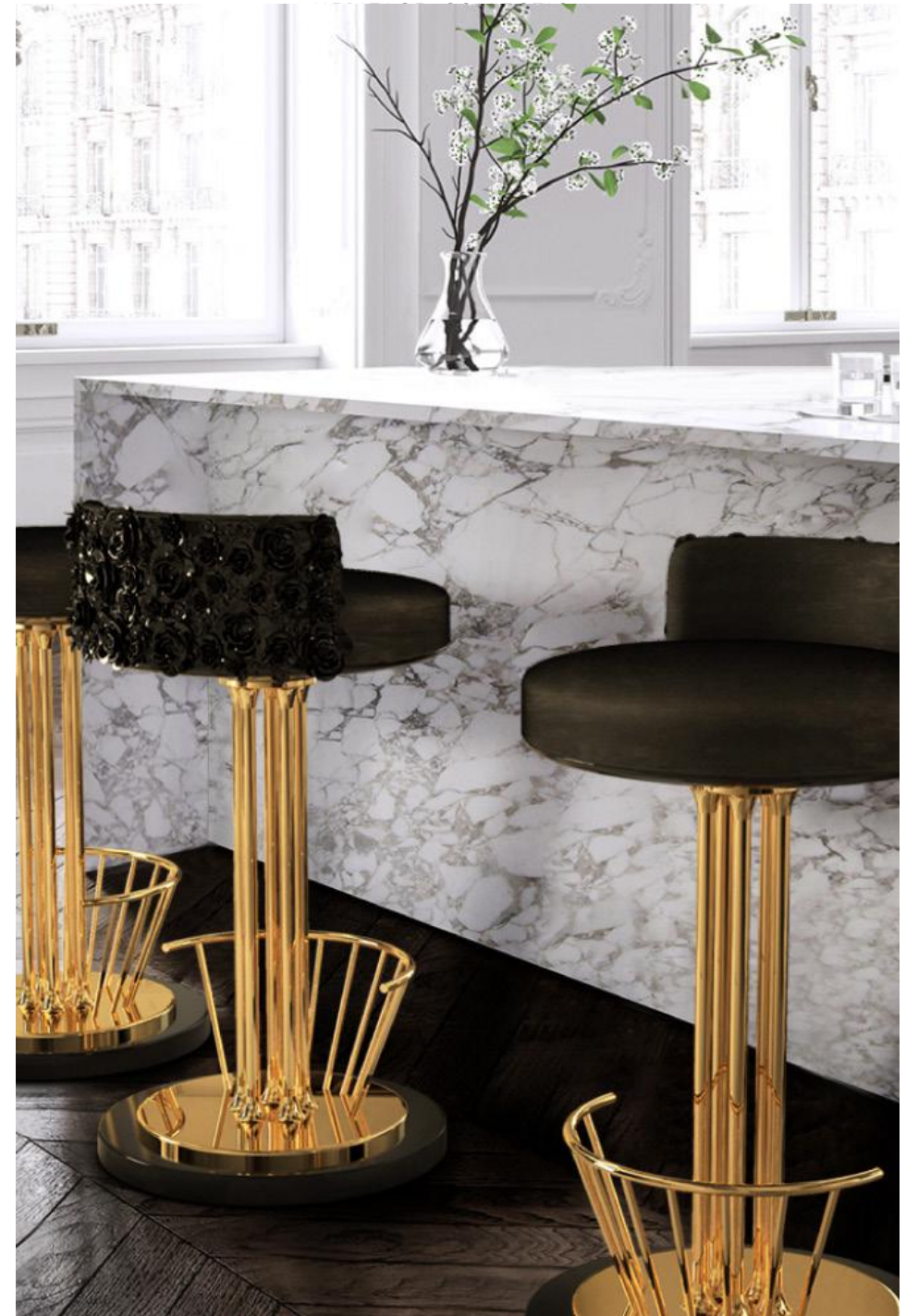


PILAR BAR STOOL

Dia. 42.5cm | 16.7" H 83cm | 32.6"

The signature imprint of Malabar's baroque is felt in the heavily intricate and meticulous carving of the Pilar bar stool. Borrowing the flower ornaments from beautifully adorned baroque churches, palaces, manors or monuments, the eye-catching Pilar brings culture, detail and history to noble interiors.

Material | Structure in polished brass and high gloss lacquered brass.
Seat upholstered in velvet.





EUPHORIA
collection

NEBULA SIDE TABLE

EUPHORIA COLLECTION





NEBULA SIDE TABLE

Dia. 60cm | 23.6" H 50cm | 19.6"

Nebula, the mysterious and glorious mist observed in the distant universe, is brought down to earth in the table top of the Nebula side table.

Material | Top in radial matched ironwood with translucent coloured varnish.
Feet in Gold Plated Brass.



FÉ SIDE TABLE

Dia. 50cm | 19.6" H 60cm | 23.6"

Fé side table is a tribute piece to the originality and irreverence of Oscar Niemayer. Like all of the other Malabar pieces, Fe is characterized by the quality of its materials.

Material | Top in poplar wood and a elegant legs in copper finish.



PEARL EDITION



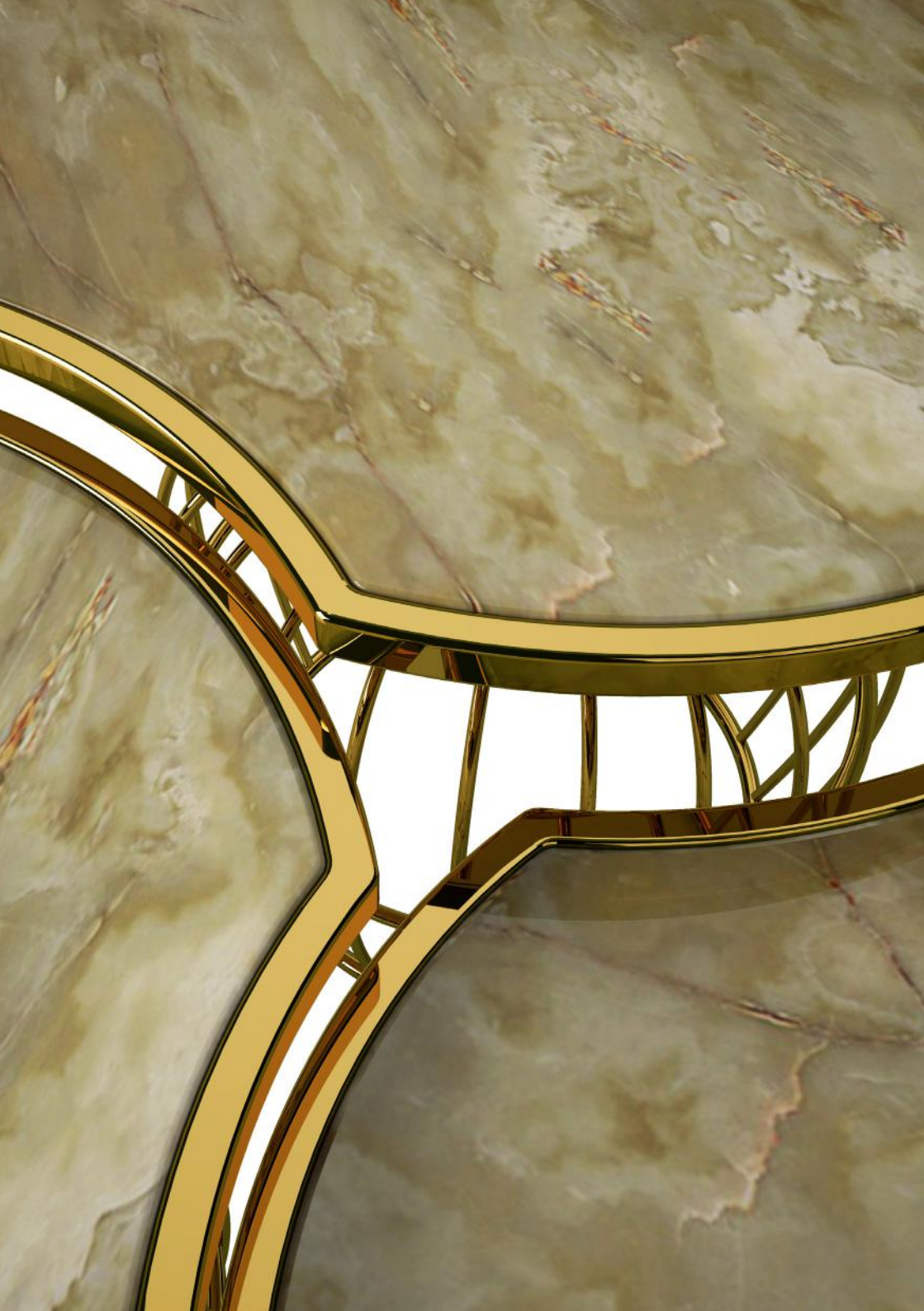
SIENNA SIDE TABLE

Dia. 50cm | 19.6" H 36cm | 14.1"

The Sienna side table is an exotic cage of emotions. The expressive marble table top displays a range of earthy colors, from platinum to nickel or from beige to sienna.

Material | Marble and polished brass.





SIENNA SIDE TABLE

small	Di. 44cm 17.3" H 50cm 19.6"
medium	Di. 48cm 18.8" H 55cm 21.6"
large	Di. 52cm 20.4" H 116cm 45.6"

The Sienna center tables are an exotic cage of emotions. The expressive onyx table top displays a range of earthy colors, from gold to ochre or from amber to sienna.

Material | Brass wireframe structure and onyx table top.



RADIANT SLIM CONSOLE

W 120cm | 47.2" D 40cm | 15.75" H 90cm | 35.4"

The classic Slim console is reborn with the new structure in Radiant Orchid and brass feet. The combination of these euphoric colors and perfect finishing will make for an amazing eye-catching accent piece, made for thriving in a cosmopolitan environment.

Material | Top structure with a Radiant Orchid lacquer, drawers in wood and with our unique black lacquered tile. Legs in brass.





RADIANT SLIM II CONSOLE

VINTAGE FINISH



RADIANT SLIM II CONSOLE

W 120cm | 47.2" D 40cm | 15.75" H 90cm | 35.4"

The Slim console is reborn with a vibrant gold color and piano black feet, while retaining its precise geometry and refinement.

Material | Top structure with a petrol blue lacquer, drawers in wood and with our unique black lacquered tile.



RADIANT SLIM III CONSOLE

W 120cm | 47.2" D 40cm | 15.75" H 90cm | 35.4"

Top structure with a chocolat brown lacquer over a gold leaf with vintage finishing, drawers in wood and with our unique black lacquered tile.

Material | Top finished with silver leaf with a high gloss varnish finish.
Interior (drawers) in solidwood. Support in ebony wood.



PROPORTION II CONSOLE

W 182cm | 71.8" D 45cm | 17.7" H 90cm | 35.4"

Proportion, a single console, with a symmetrical design, worthy of reference. The way as it combines the inherent simplicity of the piece with the perfection of the design is sublime, natural, and arouses anyones attention.

Material | The drawers are composed of black lacquer over silver leaf, radiant orchid lacquer over gold leaf, petrol blue lacquer and gold leaf with ironwood and walnut wood. The interior is satinwood. Structure in solid wood and black lacquer.



PROPORTION II NIGHTSTAND

W 50cm | 19.6" D 35cm | 13.7" H 62cm | 24.4"

A gracious tribute to Mies van der Rohe, the Proportion II nightstand combines an eccentric and luxury mix of black lacquer over silver leaf, radiant orchid lacquer over gold leaf, petrol blue lacquer and caviuna wood.

Material | Black Lacquer over silver leaf, Radiant Orchid, Petrol Blue and ironwood.



VIRTUOSO II CABINET

W 100cm | 39.9" D 60cm | 23.6" H 150cm | 59"

The art of the tile expands across borders, while portraying discoveries, journeys and historical episodes of a nation. Reflected on the Virtuoso cabinet are iconic floral patterns, traditionally observed in Portuguese-style tiling.

Material | Structure in oak, walnut or beech wood with a customizable luxury leaf finish.
Interior in satinwood and ironwood veneers.





TEMPLO II CABINET

W 80cm | 31.5" D 80cm | 31.5" H 160cm | 62.9

The Templo II cabinet borrows its signature architectural design from the original Templo, but distances itself with a more symbolic inspiration that is also closer to Malabar's heart: the blue and white tiles.

Material | Body carved and hand-painted ceramics, supported by a structure in ironwood. Interior coated in gold leaf.

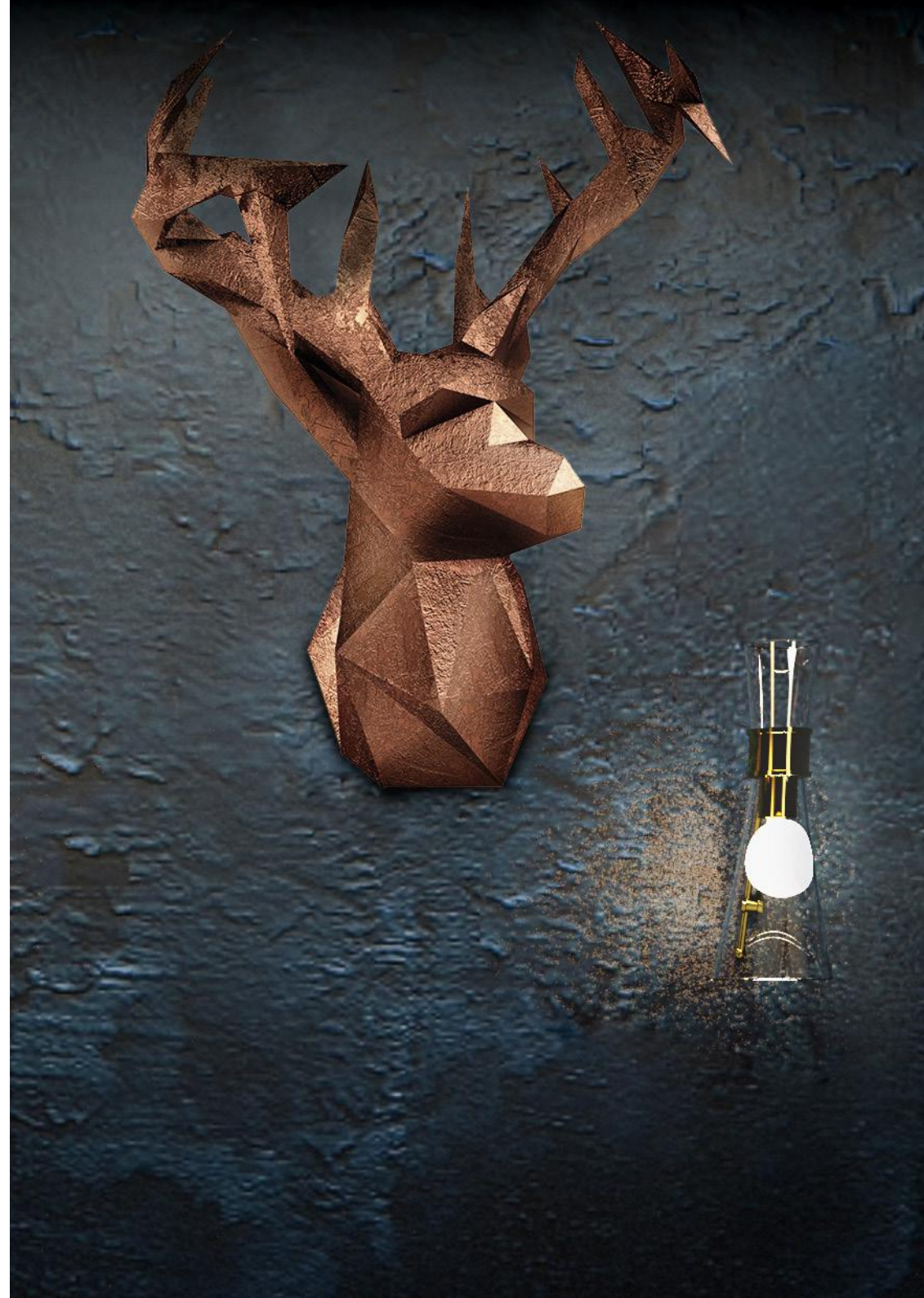


ANTLER HEAD MOUNT

W 74cm | 29.1" D 78cm | 30.7" H 102cm | 40.2"

The Antler head mount is a handmade piece, carved from wood and coated with a unique technique comprising several layers of copper leaf, guaranteeing that each new piece is exclusive. A tribute to the powerful animal whose strength lies in its antlers.

Material | Unique technique of several layers of copper or gold.



EUPHORIA COLLECTION

MIST STOOL

Dia. 33cm | 12.9" H 43cm | 16.9"

Sun rays penetrating through mist create beams of light, magically bringing out all colors of the spectrum. Mist is a decorative accessory, a stool or a side table, which transitions between each geometric shape with a harmonious flow.

Material | Lacquered RAL colors with ombre effect and high gloss finish.





TUDO ISTO É
collection



AZULEJO III GUITAR

W 40cm | 15.9" D 9cm | 3.5" H 79cm | 31.3"

A tribute to the artistic expression of a nation.
The history of the people is transcribed to the original ceramic pieces, painted in warm colours,
which decorate the walls of the seaside country: the tiles, a national icon that
Malabar is proud to honor.





TUDO ISTO E COLLECTION



MINHO GUITAR

W 40cm | 15.9" D 9cm | 3.5" H 79cm | 31.3"

Minho Guitar was designed with passion and affection to the Portuguese heritage and the traditional Viana Fiancé's Kerchiefs also known as "Lenços dos Namorados".



FADO GUITAR

W 40cm | 15.9" D 9cm | 3.5" H 79cm | 31.3"

When Fado is sung, the world hears passions, saudade, and the heartbreaks in life. That is the soul of the Portuguese people, transcribed onto the Portuguese guitar by way of a painting that expresses Portuguese reality. From the taverns to the songs that tell stories in melancholic verses.

